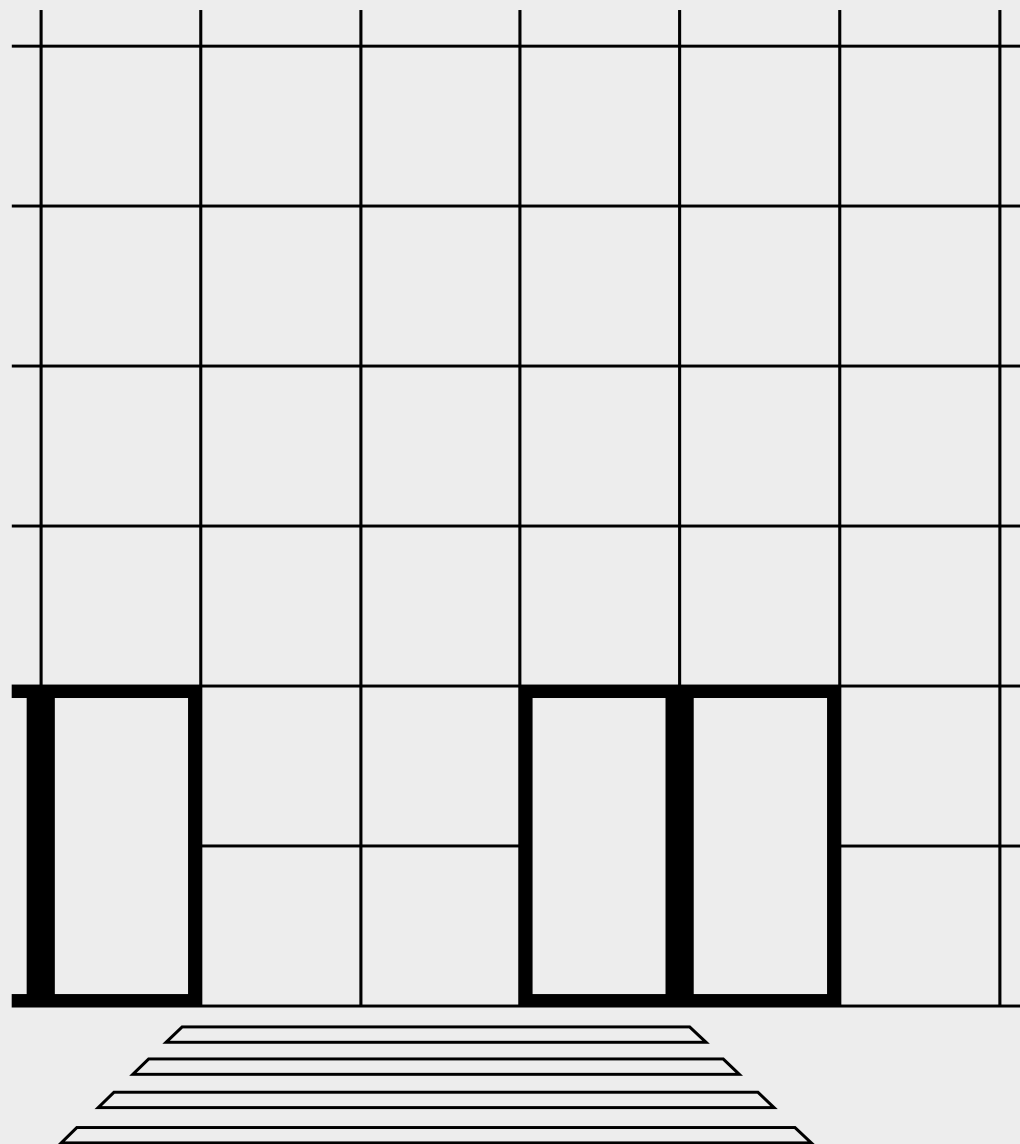




# **COMPANY** **PROFILE**



**WE. THE HISTORY**

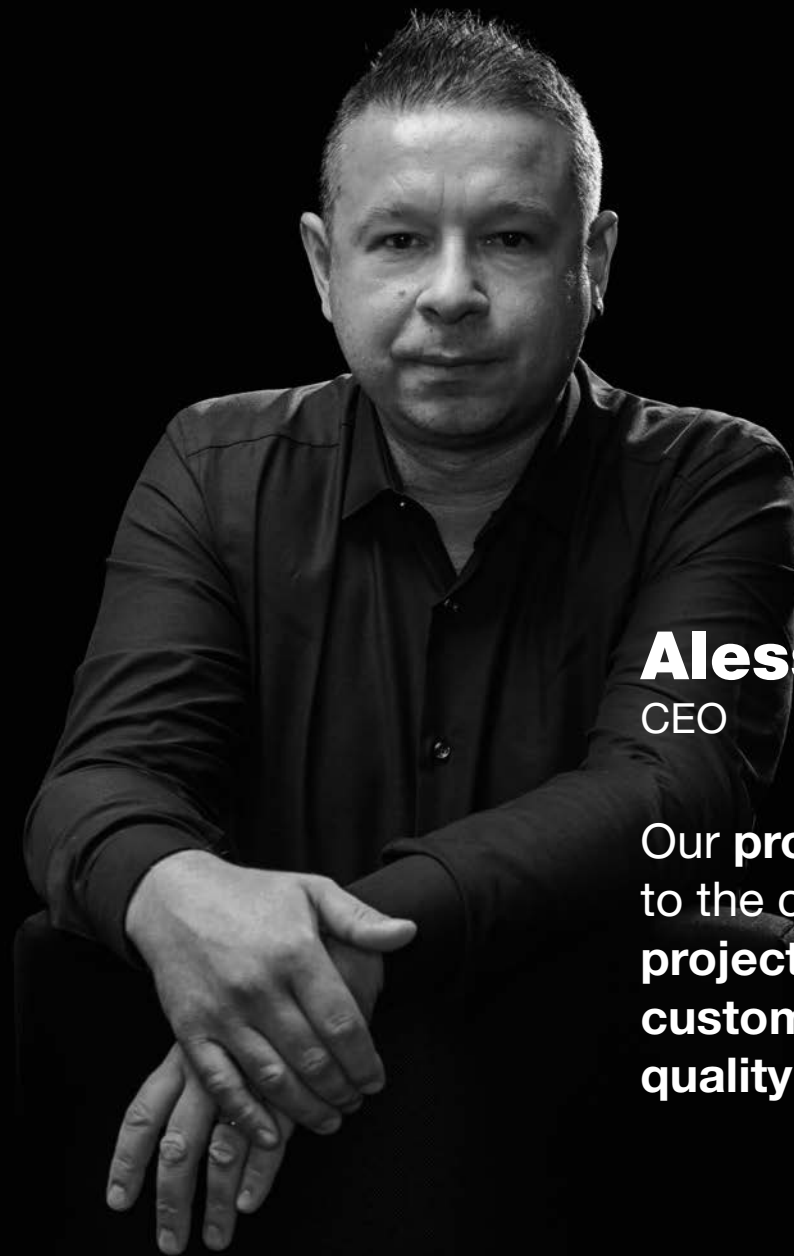


**ETOILE, 15 YEARS  
OF HISTORY AND  
30 YEARS OF EXPERIENCE** IN THE PRO-  
DUCTION OF GLASS  
**PARTITION WALLS**  
AND **INTEGRATED**  
**FURNITURE SYSTEMS**  
FOR **OFFICES** AND  
**WORKSPACE**



**Fabio Santoni**  
FOUNDER

I focused on creating a **close-knit group of people**, capable of taking the company beyond its **products**, with **passion** and **style**.



## Alessio Santoni

CEO

Our **products** evolve according to the characteristics of each **project** and the requests of each **customer**, but our care and **quality** never change.



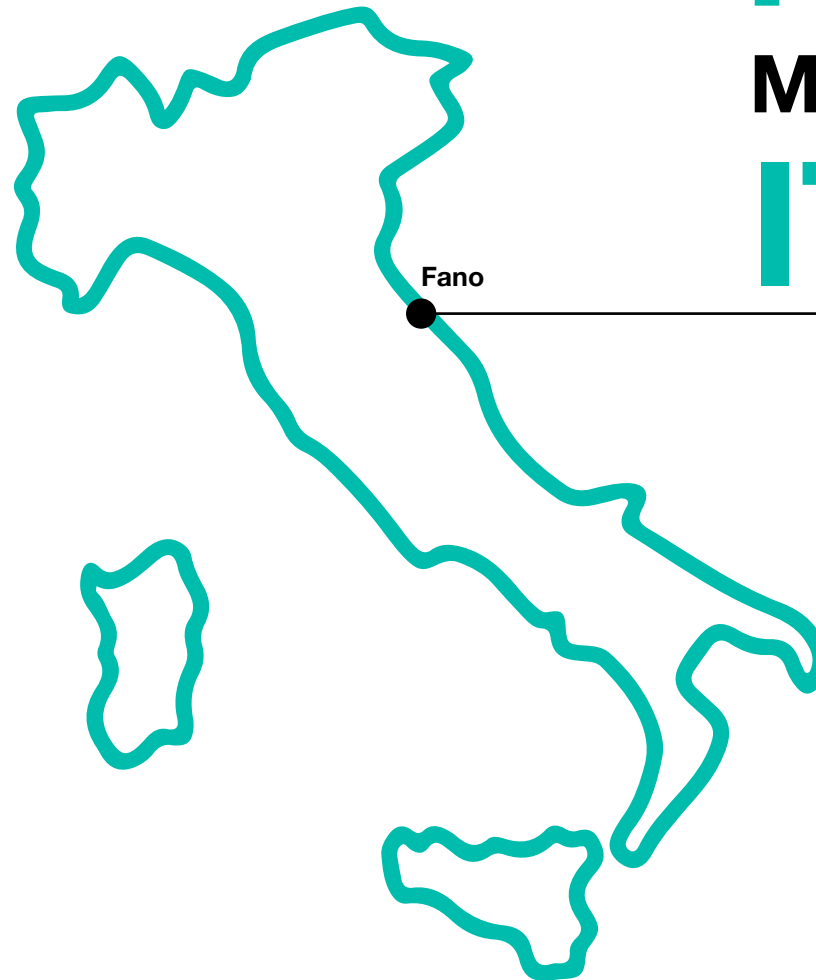
**Matteo Massi**  
PURCHASING MANAGER

Our relentless **search** for  
**quality materials** and **reliable**  
suppliers is an essential  
added value.



# FROM DESIGN TO FINAL IMPLEMENTATION

Entirely Italian  
**style** and **design**



**100%**  
**MADE IN**  
**ITALY**



**5.000 m<sup>2</sup>**

production spaces

**180 ton**

profiles per year

**600 m<sup>2</sup>**

showroom

**40.000 m<sup>2</sup>**

partitions produced per year

**400 m<sup>2</sup>**

offices

**170.000 ml**

seals per year

**150**

moulds

**800**

orders per year





**Italy**

**United Kingdom**

**France**

**Malta**

**Spain**

**Portugal**

**Switzerland**

**Luxembourg**

**Slovenia**

**Serbia**

**Cyprus**

**Greece**

**Russia**

**Saudi Arabia**

**Kuwait**

**Nigeria**

**Ethiopia**

**Senegal**

**Tunisia**

**Panama**

**Arab Emirates**

**Qatar**

**Libya**

**Israel**

**United States**



## 01 DESIGN AND CUSTOMISATION

Our CAD dept. and designers suit our products to the space providing the best solution to achieve both aesthetic and functional requirements.

## 02 PRODUCTION

Thanks to the close interaction with our design team, the turnaround time for a customer request is on average 48h.

## 03 DELIVERY

A standard of 100% on-time order completion thanks to a certified network of logistics companies.

## 04 INSTALLATION

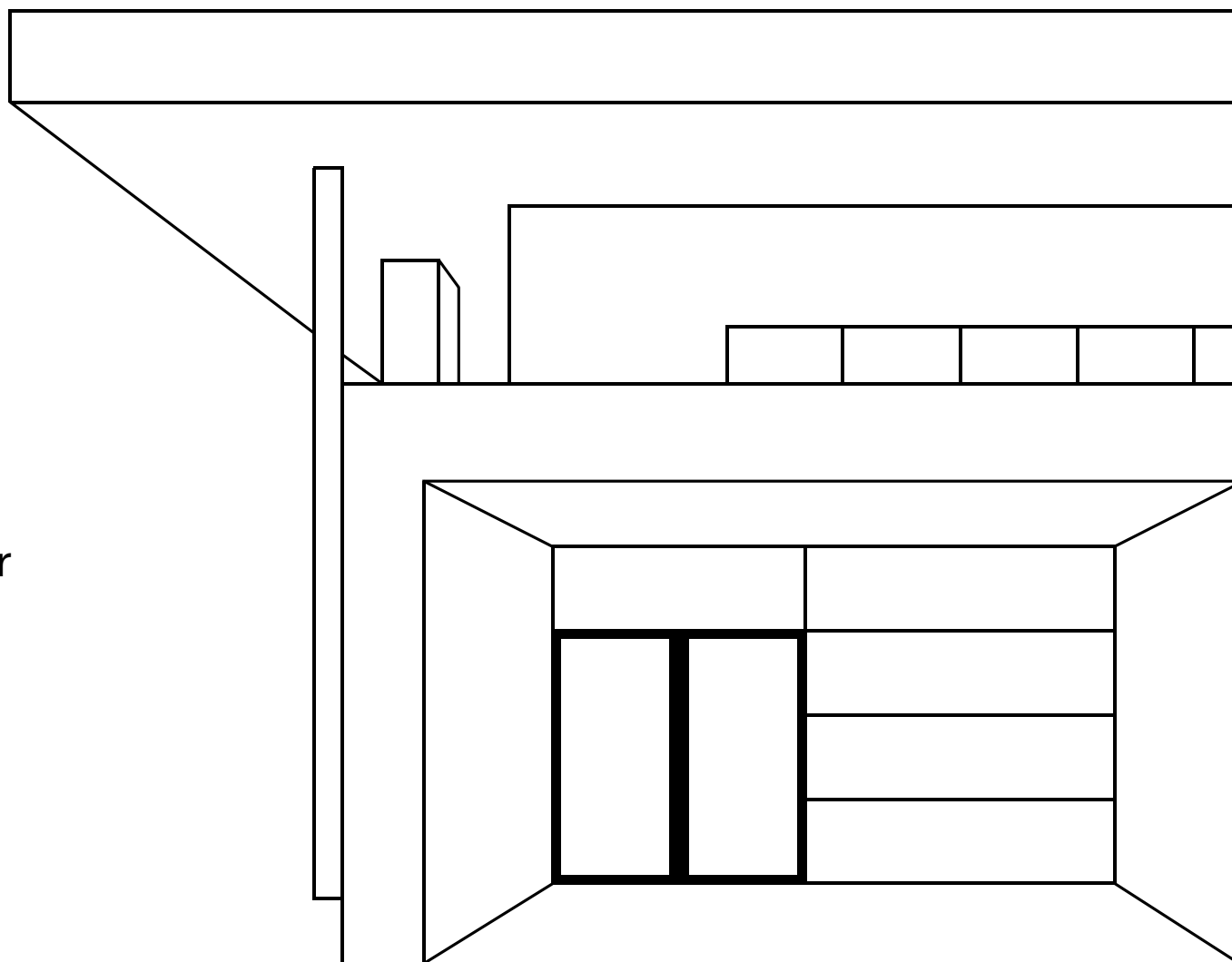
Fast installation times thanks to qualified assembly teams who have been working with the company for years.





## ETOILE AND DIVILUX, TWO SIDES OF A **COIN**

A **partnership** established **25 years ago**, combining both **production** and **creative skills** typical of the Italian and Portuguese industrial tradition by means of the company's **know-how transfer process**, expanding their commercial action in Portugal, Spain and Angola.





**4.350 m<sup>2</sup>**

production spaces

**80 ton**

profiles per year

**280 m<sup>2</sup>**

showroom

**20.000 m<sup>2</sup>**

partitions produced per year

**350 m<sup>2</sup>**

offices

**52.000 ml**

seals per year

**150**

moulds

**340**

orders per year





**LOOKING  
TOWARDS A  
SUSTAINABLE  
ORGANISATION**







# ETOILE'S BUSINESS CYCLE INCLUDES FULL RESPECT FOR THE ENVIRONMENT



- 01 use of **energy coming from sustainable sources** only
- 02 environmentally **sustainable solutions** through the use of **state-of-the-art technologies** that combine aesthetics and functionality
- 03 selected, **zero-km suppliers** to ensure excellence and **respect for the Environment**
- 04 **packaging reduction**



# SPECIAL CARE IS DEDICATED TO QUALITY, ENVIRONMENT AND PERFORMANCE



- 01 ISO 9001/ UNI EN ISO 9001:2015**  
The ISO 9001 standard is the most famous and widespread standard for the quality management of companies and industries. A company that has obtained the ISO 9001 quality system certification offers the guarantee of a sound organisation that has the ability to control all aspects of its business and make the best use of its resources.
- 02 FSC**  
The FSC certification is an international protocol that certifies that wood products are originated from responsibly managed forests and supply chains, with a positive environmental, social and economic impact.
- 03 LEED®**  
The LEED®, certification is a voluntary and consensus based international benchmark for the design, construction and operation of high-performance green buildings. Etoile products can contribute to the following Leed credits:
  - MRc3 Building Product Disclosure and Optimization - Sourcing of Raw Materials
  - MRc5 Construction and Demolition Waste Management
  - IAQc2 Low-Emitting Materials
  - IAQc9 Acoustic Performance



# SPECIAL CARE IS DEDICATED TO QUALITY, ENVIRONMENT AND PERFORMANCE



## 04 MINIMUM ENVIRONMENTAL CRITERIA (CAM)

Etoile has established internal procedures to ensure compliance with the Minimum Environmental Criteria (CAM), mandatory environmental requirements set by the Italian Ministry of the Environment for access to public procurement.

The company continuously invests in sustainable products and processes, combining quality, innovation, and respect for the environment.

## 05 CE MARKING (E.BOX)

E.Box has achieved compliance with CE Marking, ensuring adherence to European requirements for safety, quality, and performance, and confirming its reliability and suitability for use in professional and design contexts.

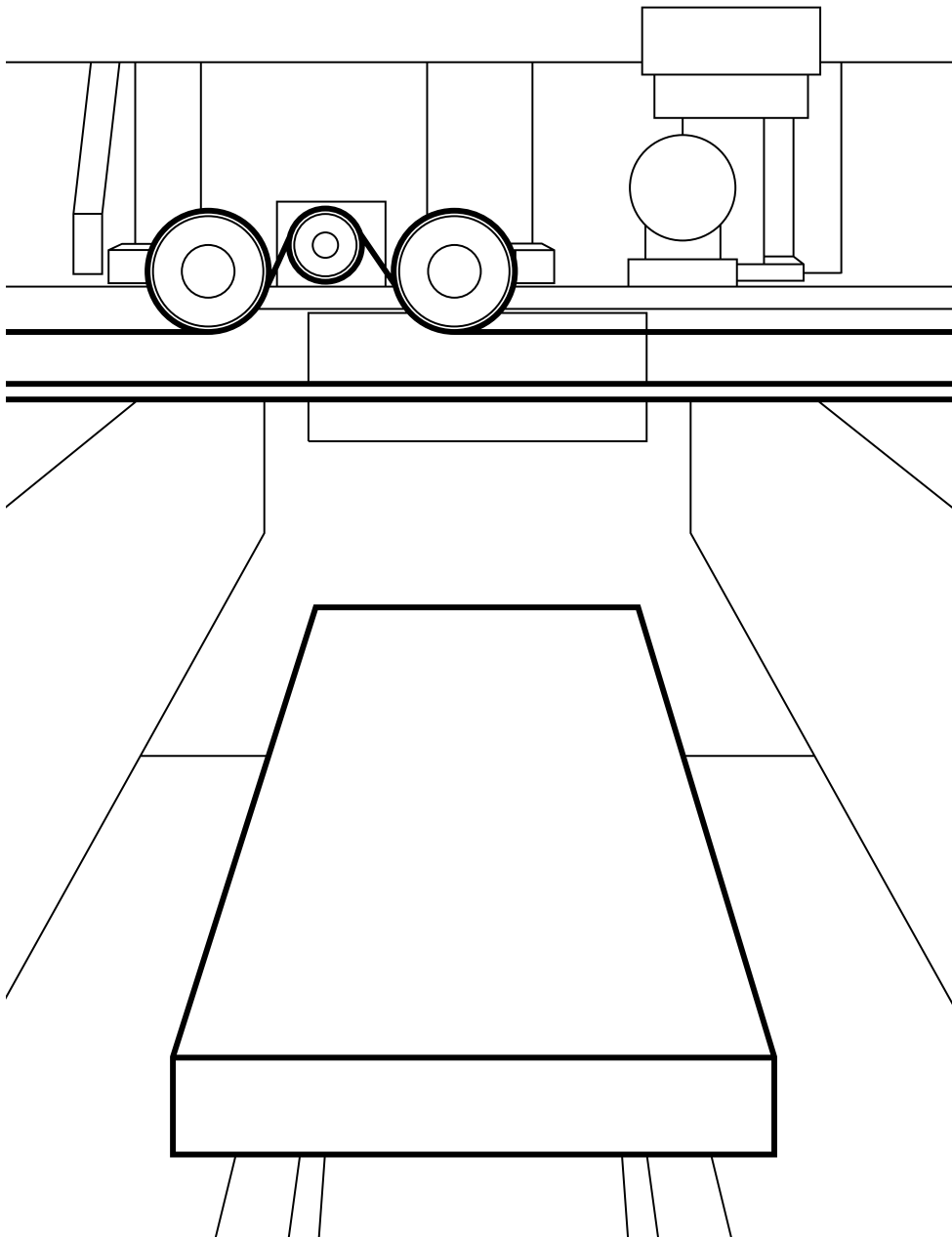
## 06 PRODUCT CERTIFICATIONS

Over 100 product certifications attest to Etoile's ongoing commitment to ensuring high standards in terms of acoustic performance, mechanical strength, and safety.



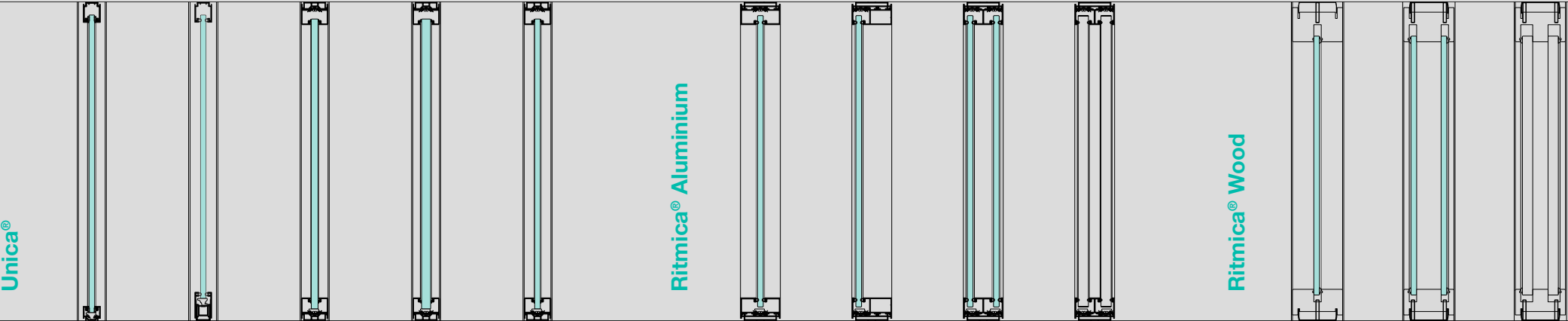


# **ETOILE'S PRODUCTS**



INTERNAL **PROCESSES**  
AND **MANUFACTURE**  
SYSTEMATICALLY  
STRUCTURED **TO TURN**  
SINGLE **COMPONENTS**  
INTO UNIQUE **PRODUCTS**

Partitions



Unica®

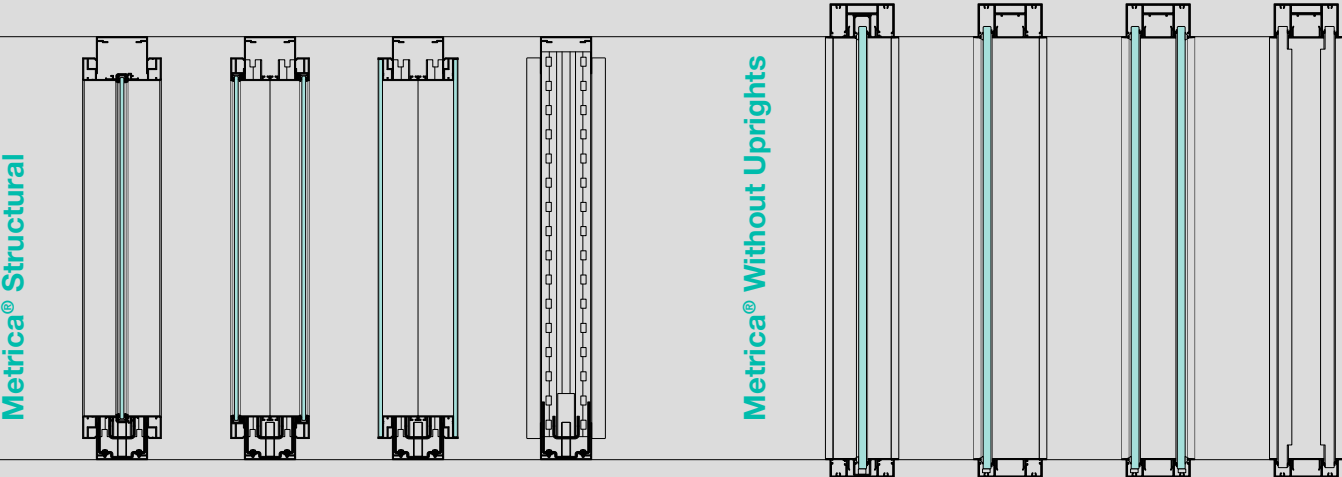
Ritmica® Aluminium

Ritmica® Wood

► thk. 51 mm

► thk. 70 mm

► thk. 92 mm



Metrica® Structural

Metrica® Without Uprights



THIRTY-THREE hinged doors



EIGHTEEN external sliding doors

THREE internal sliding doors

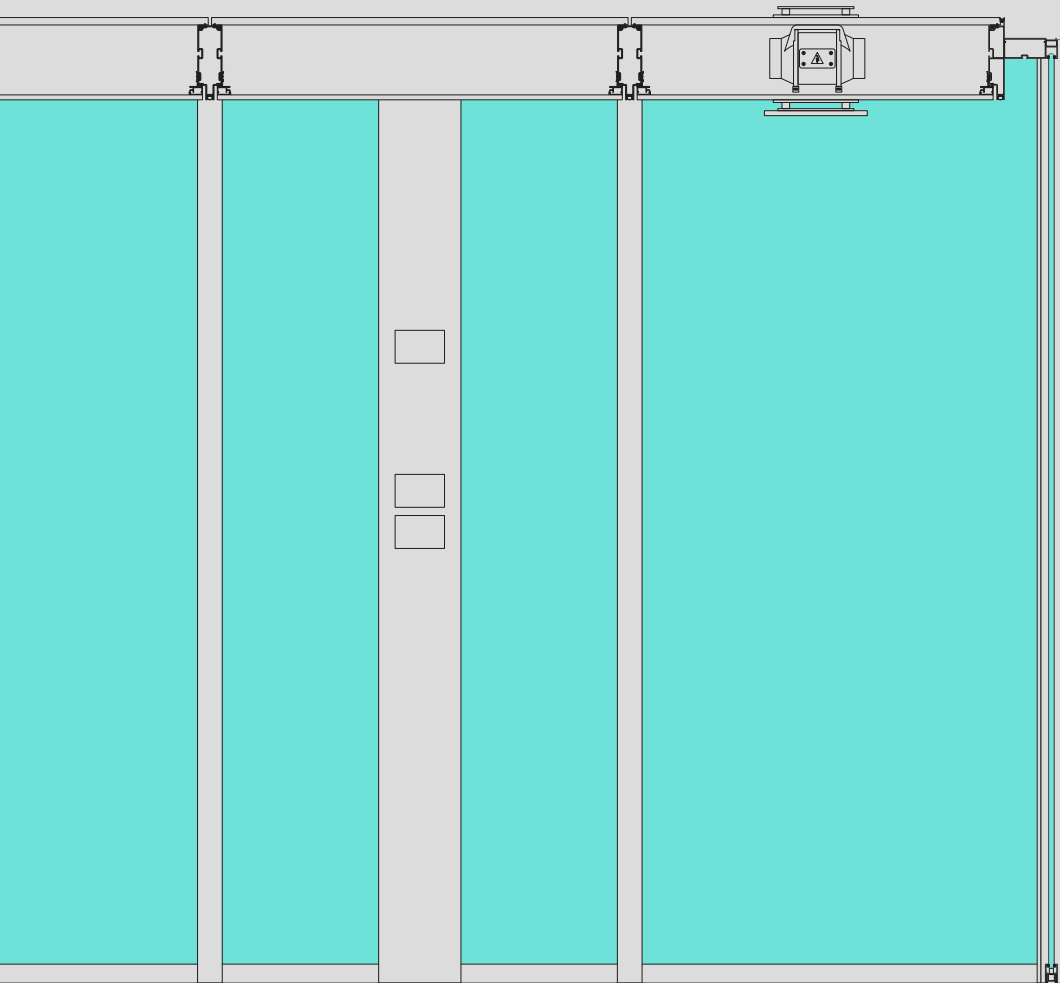
► thk. 104 mm

► thk. 97 mm

# E.Box



**E.Box** is a collection of **acoustic cubicles**, intended for **meetings** and **individual work**, designed to guarantee perfect **acoustic comfort** and **privacy**. It is available in **seven standard formats** and **one architectural version**.



E.Box 100x100



E.Box 100x150



E.Box 150x250



E.Box 200x200



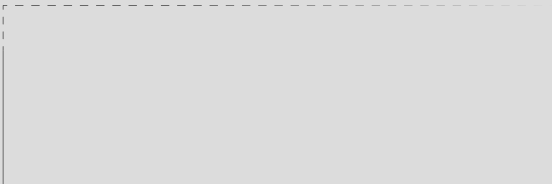
E.Box 250x250



E.Box 300x300



E.Box 400x400

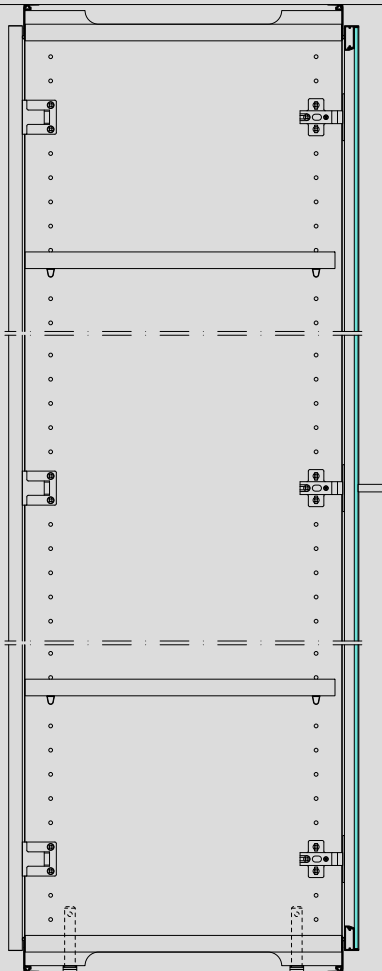


E.Box Architectural

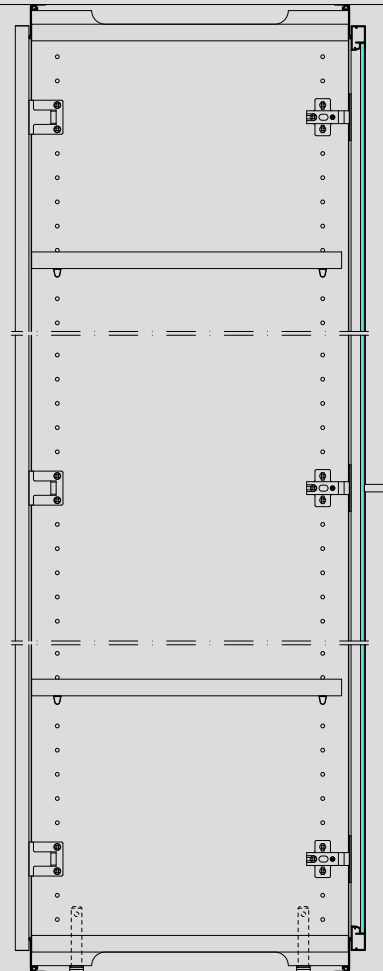
## Cabinets



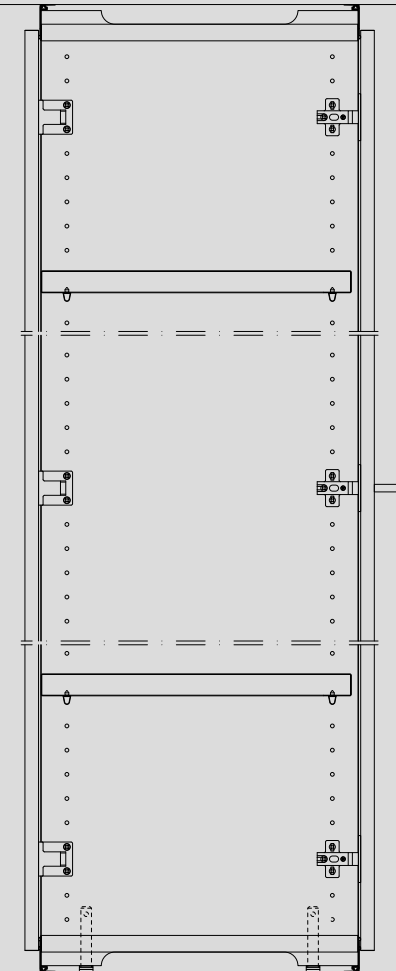
**Quadra** is a **storage partition** available in **three different depths**, 600, 462 and 366 mm, combining **three types of doors**: **external flush-fitted glass**, **internal flush-fitted glass**, and **wood**.



Quadra® S



Quadra® V

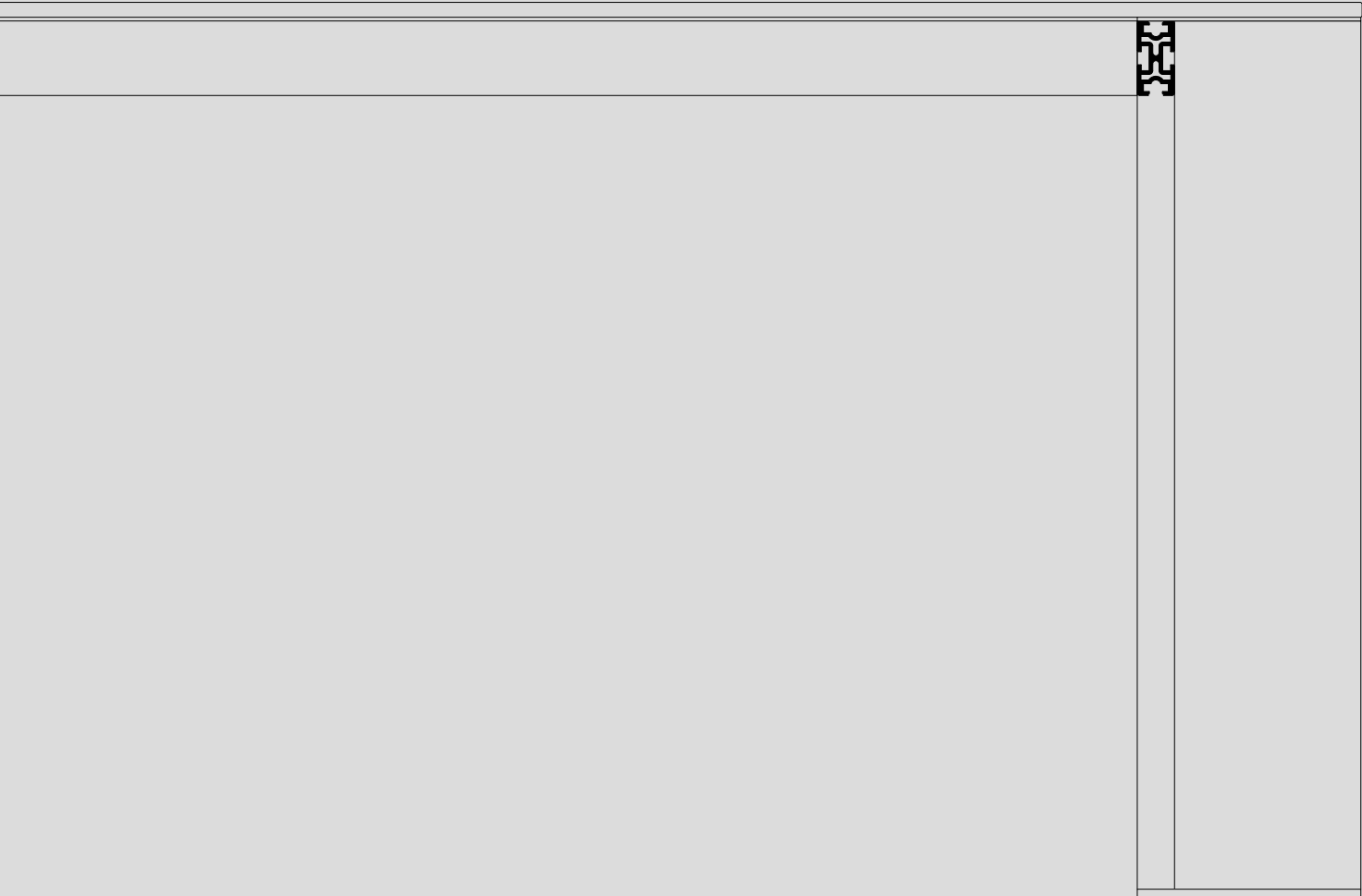


Quadra® Solid

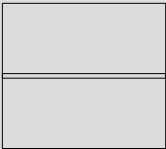
# Dodici



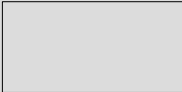
**Operational, executive and meeting tables** with **four perimetric legs** made of aluminium extrusions and **12-mm thick tops**, available in **unicolour hpl**, **back-lacquered glass** or **18-mm thick veneer**.



**Single**  
workstations



**Double**  
workstations



**Executive**  
Tables



**Meeting**  
Tables

**Plus**

01. Thickness **51 mm**
02. Floor, ceiling, corner and end **profiles** in extruded **aluminium** 6060 UNI 9006/1
03. **5 different types of glass partitions** - single central glass with differing thicknesses
04. **3 safety or acoustic glass thicknesses** available
05. **Solid panels** in different sizes - self-standing or fixed to glass
06. **Fixed and adjustable corner profiles** - 2/3/4-way connections
07. **Vertical joints** between glass panels made of polycarbonate, aluminium or transparent double-sided tape
08. **Wireable door frame**
09. **Inspectionable service module**
10. **7 different types of hinged doors** - solid, tempered glass and framed glass
11. **5 different types of external sliding doors** - solid, tempered glass and framed glass



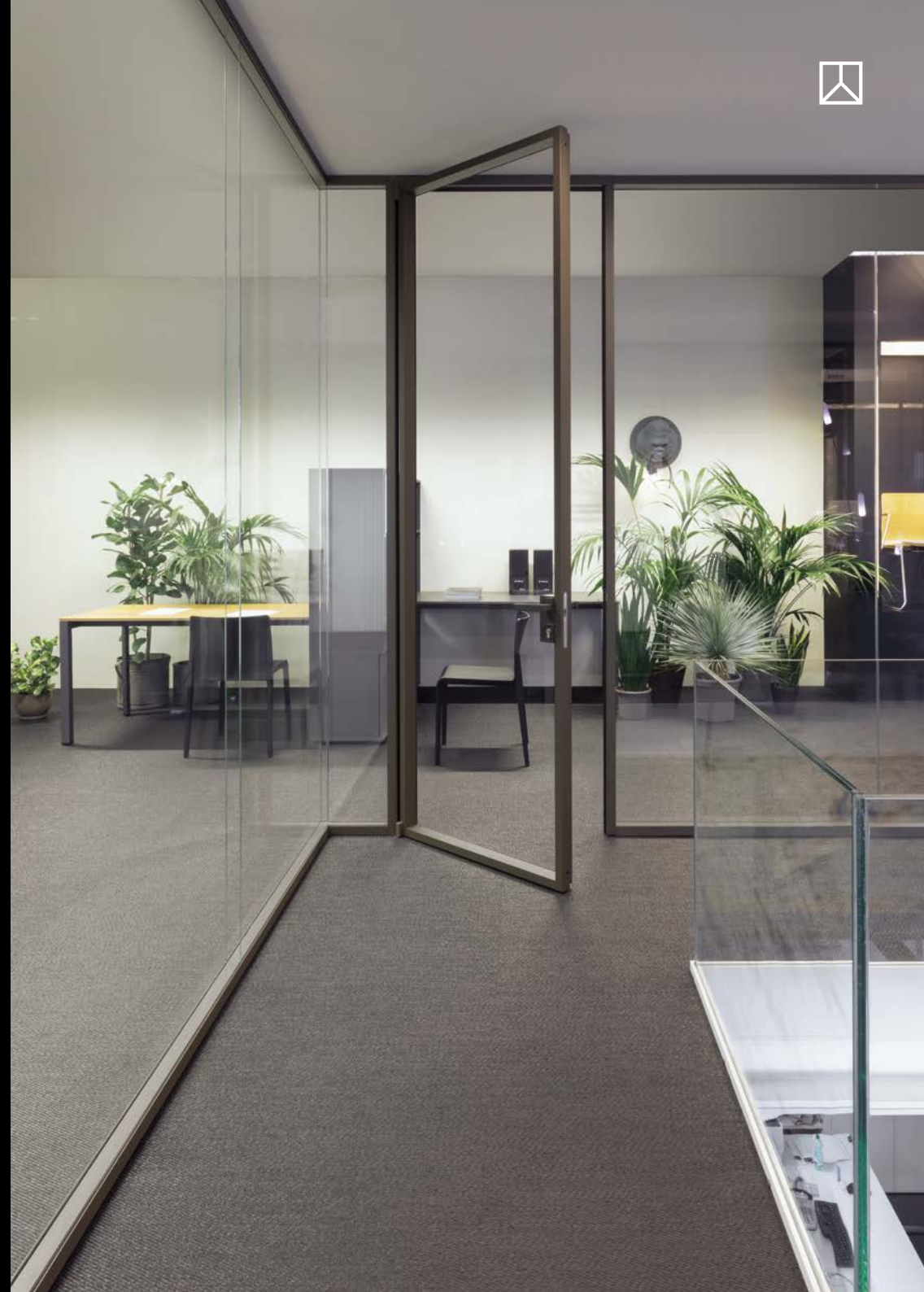


## RITMICA® ALUMINIUM

D1/ DA/ D2/ SOLID

### Plus

01. Thickness **70 mm**
02. Floor, ceiling, corner and end **profiles** in extruded **aluminium** 6060 UNI 9006/1
03. **3 different types of glass partitions** - single central, asymmetrical and double glass
04. **1 solid partition** with double 18-mm thick melamine-faced panels
05. **2 safety or acoustic glass thicknesses** available
06. **Fixed corner profiles**
07. **Vertical joints** between glass panels made of polycarbonate, aluminium or transparent double-sided tape
08. **Door frame with cable routing**
09. **Service module**
10. **8 different types of hinged doors** - solid, tempered glass and framed glass
11. **5 different types of external sliding doors** - solid, tempered glass and framed glass





# RITMICA® WOOD

D1/ D2/ SOLID

## Plus

01. Thickness **92 mm**
02. **Veneered wooden** structure
03. **“Finger joint”** connection between timber strips
04. Floor **profiles** in 6060 UNI 9006/1 extruded **aluminium**, concealed to secure impermeability
05. **2** different types of **glass partitions** - single central and double glass
06. **1 solid partition** with double 18-mm thick melamine-faced panels
07. **2** safety or acoustic **glass thicknesses** available
08. **Fixed corner profiles**
09. **Vertical joints** between glass panels made of wood, polycarbonate or transparent double-sided tape
10. **Door frame** with **cable routing**
11. **Service module**
12. **5 different types of hinged doors** - solid, tempered glass and framed glass
13. **3 different types of external sliding doors** - solid, tempered glass and framed



## METRICA® STRUCTURAL

R/ V/ S/ SOLID

### *Plus*

01. Thickness **104 mm**
02. UNI EN 10143 **Zinc-coated metal structure**
03. **Vertical modules and horizontal strips partition**
04. **500/1000/1500/2000 mm** wide panels
05. 32-mm **spaced rack** for panel fixing
06. **3 different types of glass** partitions - single central, double-framed and double external flush glass with screen-printed edges
07. **1 solid partition** with double 18-mm thick melamine-faced panels
08. **2 safety or acoustic glass thicknesses** available
09. **Fixed and adjustable corner profiles** - 2/3/4-way connections
10. **Wireable door frame**
11. **Inspectionable service module**
12. **9 different types of hinged doors** - solid, tempered glass and framed glass
13. **2 different types of hinged doors** - solid and tempered glass
14. **5 different types of external sliding doors** - solid, tempered glass and framed glass



## METRICA® WITHOUT UPRIGHTS

F1/ FA/ F2/ F SOLID

### *Plus*

01. Thickness **97 mm**
02. Recessed floor and ceiling **rails**, corner **profiles** and wall-end **uprights** in 6060 UNI 9006/1 extruded **aluminium**
03. **3 versions of glazed partitions** - single central glass, asymmetric glass and double glass
04. **1 version** with **double solid panels**, lacquered or veneered - 18 mm thick
05. **2** safety or acoustic **glass thicknesses** available
06. **Fixed corner profiles** - 2/3-way connections
07. **Vertical joints** between glass panels made of polycarbonate, aluminium or transparent double-sided tape
08. Service **module**
09. **4 different types of hinged doors** - solid, tempered glass and framed glass
10. **1 version of internal sliding door** - framed glass





*Plus*

01. **7 standard dimensions** available
02. **1 architectural version**
03. Height: external **2350 mm** - internal **2150 mm**
04. Floor and ceiling **rails**, corner **profiles** and **uprights** in 6060 UNI 9006/1 **extruded aluminium**
05. Lower **adjustable bead profiles** - 30 x 50 mm (minimum height)
06. **Fitted** intermediate uprights and corner profiles
07. **Single central glass** - 66.2a laminated glass
08. **Sound-absorbing false ceiling** in **PET felt**
09. Internal service **module, wired and fitted**
10. Ceiling **integrated lighting system** with presence detector
11. Ceiling-mounted **air-exchange system**
12. **Hinged door** with framed glass



**QUADRA®**  
S/ V/ SOLID

**Plus**

01. **3 depths** - 600, 462 and 366 mm
02. **2 widths** - 500 and 1000 mm
03. **Supporting structure** made of 22-mm thick melamine-faced panels
04. **Back and side panels** made of 18-mm thick melamine-faced, veneered or lacquered panels
05. **3 types of doors** - solid, framed glass or flush glass door
06. **Aluminium** top and bottom **finishing profile**
07. **Wiring** in **lower base**
08. Internal **shelves** in **melamine** or **metal**
09. **Coat racks**
10. **Pull-out drawers** and **file holders**
11. **Full-height doors** and **open compartments**
12. **Aluminium rack profile** or 33-mm spaced drilling for shelves' height adjustment
13. **Cabinets** can be **integrated** with all Etoile partition types



*Plus*

01. Operating, executive and meeting **tables**
02. Four-leg 6060 UNI 9006/1 **aluminium structure**
03. **Tops** in hpl or back-lacquered glass - **12 mm thick**
04. Melamine-faced or veneered **tops** - **18 mm thick**
05. One or compound **worktop**
06. **Wiring** with standard **cable guides** or flush **top access**
07. **Legs can be fitted** with shelves and CPU holder
08. Glass or wooden **dividing screens**
09. **Drawer cabinets** in wood or metal
10. **Service furniture**







# OVER 100 PRODUCT CERTIFICATIONS

## UNICA® SC3

- Whole module with two laminated glass panels 5/+5 and structural upright - Mechanical test - Certificate no. 287871 IT/EN - UNI 8201:1981, as per Ministerial Decree on infrastructures dated 14/01/2008

## UNICA® SC1

- Single glass partition 66.1 (laminated 6+6+pvb 0.38) - Acoustic test - Certificate no. 355037 IT/EN - UNI EN ISO 10140-2: 2010 and UNI EN ISO 717-1: 2013
- Single glass partition 66.2a (laminated 6+6+0.76) - Acoustic test - Certificate no. 355038 IT/EN - UNI EN ISO 10140-2: 2010 and UNI EN ISO 717-1: 2013
- Whole module with two laminated glass panels 6+6 and structural upright - Mechanical test - Certificate no. 356911 IT/EN - ETAG GUIDE 003:2012 and UNI ISO 7892:1990

## UNICA® SC2

- Single glass partition 88.1 (laminated 8+8+pvb 0.38) - Acoustic test - Certificate no. 355039 IT/EN - UNI EN ISO 10140-2: 2010 and UNI EN ISO 717-1: 2013
- Single glass partition 88.2a (laminated 8+8+0.76) - Acoustic test - Certificate no. 355040 IT/EN - UNI EN ISO 10140-2: 2010 and UNI EN ISO 717-1: 2013
- Whole module with two laminated glass panels 8+8 and structural upright - Mechanical test - Certificate no. 356910 IT/EN - ETAG GUIDE 003:2012 and UNI ISO 7892:1990

## UNICA® DOORS

- Wooden door - Acoustic test - Certificate no. 243518 IT/EN - UNI EN ISO 140-3:2006 and UNI EN ISO 717-1:2007
- 10-mm tempered glass door - Acoustic test - Certificate no. 243519 IT/EN - UNI EN ISO 140-3:2006 and UNI EN ISO 717-1:2007
- Door with framed 6/7 laminated glass - Acoustic test - Certificate no. 243517 IT/EN - UNI EN ISO 140-3:2006 and UNI EN ISO 717-1:2007
- Thin and framed hinged door with 6-mm single central glass - Acoustic test - Certificate no. 355042 IT/EN - UNI EN ISO 10140-2:2010 and UNI EN ISO 717-1:2013
- 51-mm-thick framed hinged door with double 6-mm - Acoustic glass - Certificate no. 355043 IT/EN - UNI EN ISO 10140-2:2010 and UNI EN ISO 717-1:2013
- Thin and framed hinged door with 6-mm single central glass - Mechanical test - Certificate no. 356933

IT/EN ETAG GUIDE 003:2012 and UNI ISO 7892:1990

- 51-mm-thick framed hinged door with two 6-mm laminated glass panels - Mechanical test - Certificate no. 356932 IT/EN - ETAG GUIDE 003:2012 and UNI ISO 7892:1990

## RITMICA® D1

- Single glass partition 55.1 (laminated 5+5+pvb 0.38) - Acoustic test - Certificate no. 355026 IT/EN - UNI EN ISO 10140-2: 2010 and UNI EN ISO 717-1: 2013
- Single glass partition 55.2a (laminated 5+5+0.76) - Acoustic test - Certificate no. 355028 IT/EN - UNI EN ISO 10140-2: 2010 and UNI EN ISO 717-1: 2013
- Single glass partition 66.1 (laminated 6+6+pvb 0.38) - Acoustic test - Certificate no. 355030 IT/EN - UNI EN ISO 10140-2: 2010 and UNI EN ISO 717-1: 2013
- Single glass partition 66.2a (laminated 6+6+0.76) - Acoustic test - Certificate no. 355032 IT/EN - UNI EN ISO 10140-2: 2010 and UNI EN ISO 717-1: 2013
- Single glass partition 55.1- Mechanical test - Certificate no. 356913 IT/EN ETAG GUIDE 003:2012 and UNI ISO 7892:1990

## RITMICA® D2

- Double glass partition 55.1 (laminated 5+5+pvb 0.38) - Acoustic test - Certificate no. 355027 IT/EN - UNI EN ISO 10140-2: 2010 and UNI EN ISO 717-1: 2013
- Double glass partition 55.2a (laminated 5+5+pvb 0.76) - Acoustic test - Certificate no. 432256 IT/EN - UNI EN ISO 10140-2:2021 and UNI EN ISO 717-1:2021
- Double glass partition 66.1 (laminated 6+6+pvb 0.38) - Acoustic test - Certificate no. 355031 IT/EN - UNI EN ISO 10140-2: 2010 and UNI EN ISO 717-1: 2013
- Double glass partition 66.2a (laminated 6+6+pvb 0.76) - Acoustic test - Certificate no. 432258 IT/EN - UNI EN ISO 10140-2:2021 and UNI EN ISO 717-1:2021
- Double glass partition 55.1- Mechanical test - Certificate no. 356912 IT/EN ETAG GUIDE 003:2012 and UNI ISO 7892:1990

## RITMICA® SOLID

- Solid wall with double 18-mm panel - Acoustic test - Certificate n. 355034 IT/EN - UNI EN ISO 10140-2:2010 and UNI EN ISO 717-1:2013
- Solid wall with double 18-mm panel Mechanical test - Certificate no. 356914 IT/EN ETAG GUIDE 003:2012 and UNI ISO 7892:1990

## RITMICA® DOORS

- Framed door -70-mm - double 6-mm glass - Acoustic test - Certificate no. 355044 IT/EN - UNI EN ISO 10140-2:2010 and UNI EN ISO 717-1:2013
- 70-mm famed door - double glass 6 mm. Mechanical test - Certificate no. 356931 IT/EN ETAG GUIDE 003:2012 and UNI ISO 7892:1990

## RITMICA® WOOD D2

- Double glass partition 66.2 (laminated 6+6+pvb 0,76) - Acoustic test - Certificate no. 432259 IT/EN - UNI EN ISO 10140-2:2021 and UNI EN ISO 717-1:2021

# Product Certifications



## METRICA®

- Whole wooden module - Mechanical test - Certificate no. 253560 IT/EN - UNI 8201:1981
- Particle-board dark oak melamine-finished panels - Reaction to fire - Certificate no. 253501 IT/EN - UNI EN 13823:2005
- Classification for Reaction to Fire - Certificate no. 253504 IT/EN - UNI EN 13501 1:2007

## METRICA® SOLID

- Whole wooden module with internal insulating layer inside filling panels only - rock wool d=35 Kg/sqm Th.=60 mm - Acoustic test - Certificate no. 248482 IT/EN - UNI EN ISO 140-3:2006 and UNI EN ISO 717-1:2007
- Whole wooden module with internal rock-wool insulating layer d=35 Kg/sqm Th.=60 mm and echostop - Acoustic test - Certificate no. 248483 IT/EN - UNI EN ISO 140-3:2006 and UNI EN ISO 717-1:2007
- Module with horizontal panels with internal rock-wool insulating layer inside filling panels only d=35 Kg/sqm Th.=60 mm and echostop - Acoustic test - Certificate no. 248488 IT/EN - UNI EN ISO 140-3:2006 and UNI EN ISO 717-1:2007
- Module with horizontal panels with internal rock-wool insulating layer d=35 Kg/sqm Th.=60 mm and co-extruded profile - Acoustic test - Certificate no. 248489 IT/EN - UNI EN ISO 140-3: 2006 and UNI EN ISO 717-1: 2007
- Whole module and echostop - Acoustic test - Certificate no. 248484 IT/EN - UNI EN ISO 140-3:2006 and UNI EN ISO 717-1:2007

## METRICA® R

- Whole module with central laminated glass 6/7 - Insulating layer inside filling panels only Acoustic test - Certificate no. 248485 IT/EN - UNI EN ISO 140-3: 2006 and UNI EN ISO 717-1: 2007
- Module with horizontal glazed elements with central laminated glass 6/7 - insulating layer inside filling panels and echostop - Acoustic test - Certificate no. 248490 IT/EN - UNI EN ISO 140-3: 2006 and UNI EN ISO 717-1: 2007
- Module with horizontal glazed elements with central laminated glass 6/7 - insulating layer inside filling panels and coextruded profile - Acoustic test - Certificate no. 254591 IT/EN - UNI EN ISO 140-3: 2006 and UNI EN ISO 717-1: 2007
- Half-glazed module with central laminated glass 6/7 - insulating layer inside filling panels and echostop - Acoustic test - Certificate no. 248046 IT/EN - UNI EN ISO 140-3: 2006 and UNI EN ISO 717-1: 2007
- Half-glazed module with central laminated glass 6/7 - Insulating layer, coextruded profile and echostop - Acoustic test - Certificate no. 248047 IT/EN - UNI EN ISO 140-3: 2006 and UNI EN ISO 717-1: 2007
- Whole glazed module - central laminated glass 6/7 - Mechanical test - Certificate no. 253562 IT/EN - UNI 8201:1981

## METRICA® S

- Whole module with two glued tempered glass panels 5 mm- Insulating layer inside filling panels and echostop - Acoustic test - Certificate no. 248494 IT/EN - UNI EN ISO 140-3: 2006 and UNI EN ISO 717-1: 2007
- Module with horizontal glazed elements with two glued tempered glass panels 5 mm thick - insulating layer inside filling panels and coextruded profile and echostop - Acoustic test - Certificate no. 254593 IT/EN - UNI EN ISO 140-3: 2006 and UNI EN ISO 717-1: 2007
- Half-glazed module with two glued tempered glass panels, 5 mm thick - Insulating layer inside filling panels and echostop - Acoustic test - Certificate no. 248045 IT/EN - UNI EN ISO 140-3: 2006 and UNI EN ISO 717-1: 2007

- Half-glazed module with two glued tempered glass panels 5 mm thick - Insulating layer, coextruded profile and echostop - Acoustic test - Certificate no. 248048 IT/EN - UNI EN ISO 140-3: 2006 and UNI EN ISO 717-1: 2007
- Whole glazed module - two glued tempered glass panels, 5 mm thick- Mechanical test - Certificate no. 253563 IT/EN - UNI 8201:1981

## METRICA® V

- Whole module with two framed laminated glass panels 6/7 - Insulating layer inside filling panels and echostop -Acoustic test - Certificate no. 248486 IT/EN - UNI EN ISO 140-3: 2006 and UNI EN ISO 717-1: 2007
- Module with horizontal glazed elements with two framed laminated glass panels 6/7 - Insulating layer inside filling panels and echostop - Acoustic test - Certificate no. 248492 IT/EN - UNI EN ISO 140-3: 2006 and UNI EN ISO 717-1: 2007
- Whole module with two framed laminated glass panels 6/7 - Insulating layer inside filling panels and co-extruded profiles - Acoustic test - Certificate no. 248487 IT/EN - UNI EN ISO 140-3: 2006 and UNI EN ISO 717-1: 2007
- Module with horizontal glazed elements with two framed laminated glass panels 6/7 - Insulating layer inside filling panels and coextruded profiles - Acoustic test - Certificate no. 248493 IT/EN - UNI EN ISO 140-3: 2006 and UNI EN ISO 717-1: 2007
- Half-glazed module with two framed laminated glass panels 6/7 - Insulating layer inside filling panels and echostop - Acoustic test - Certificate no. 248044 IT/EN - UNI EN ISO 140-3: 2006 and UNI EN ISO 717-1: 2007
- Half-glazed module with two framed laminated glass panels 6/7 - Insulating layer, coextruded profiles and echostop - Acoustic test - Certificate no. 248049 IT/EN - UNI EN ISO 140-3: 2006 and UNI EN ISO 717-1: 2007
- Whole glazed module - two framed laminated glass panels 6/7 - Mechanical test - Certificate no. 253561 IT/EN - UNI 8201:1981

## METRICA® DOORS

- Wooden door - Acoustic test - Certificate no. 251626 IT/EN - UNI EN ISO 140-3:2006 and UNI EN ISO 717-1:2007
- 10-mm tempered glass door - Acoustic test - Certificate no. 251625 IT/EN - UNI EN ISO 140-3:2006 and UNI EN ISO 717-1:2007
- Door with framed 6/7 laminated glass - Acoustic test - Certificate no. 251624 IT/EN - UNI EN ISO 140-3:2006 and UNI EN ISO 717-1:2007

## E.BOX 100X150

- Acoustic cabin E.Box 100x150 - Acoustic test - Certificate no. 432463 IT/EN - UNI EN ISO 11957:2009
- Acoustic cabin E.Box 100x150 - Acoustic test - Certificate no. 432464 IT/EN - UNI EN ISO 3741:2010/EC 1-2013 and ISO 23351-1:2020



## Product Certifications

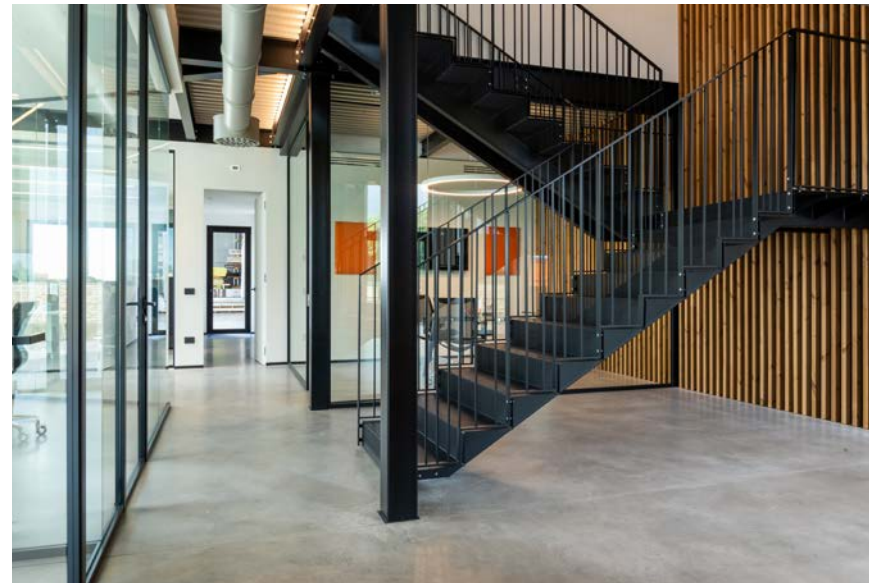


### QUADRA

- Full-height wooden storage module without internal paper filling - Acoustic test - Certificate no. 285086 IT/EN - UNI EN ISO 140-3:2006 and UNI EN ISO 717-1:2007
- Full-height wooden storage module with internal paper filling - Acoustic test - Certificate no. 285087 IT/EN - UNI EN ISO 140-3: 2006 and UNI EN ISO 717-1:2007
- Full-height wooden storage module without internal paper filling, coupled with Metrica wall insulated with rock wool d=35 Kg/sqm Th.=60 mm - Acoustic test - Certificate no. 285095 IT/EN -UNI EN ISO 140-3: 2006 and UNI EN ISO 717-1:2007
- Full-height wooden storage module without internal paper filling, coupled with Metrica wall insulated with rock wool d=35 Kg/sqm Th.=60 mm - Acoustic test - Certificate no. 285096 IT/EN - UNI EN ISO 140-3: 2006 and UNI EN ISO 717-1:2007
- Wooden storage unit with doors and drawers, without internal paper filling - Acoustic test - Certificate no. 285088 IT/EN - UNI EN ISO 140-3:2006 and UNI EN ISO 717-1:2007
- Wooden storage unit with doors and drawers, with internal paper filling - Acoustic test - Certificate no. 285089 IT/EN - UNI EN ISO 140-3: 2006 and UNI EN ISO 717-1:2007
- Wooden storage unit with doors and drawers, without internal paper filling, coupled with Metrica wall insulated with rock wool d=35 Kg/sqm Th.=60 mm - Acoustic test - Certificate no. 285097 IT/EN - UNI EN ISO 140-3: 2006 and UNI EN ISO 717-1:2007
- Cubica full-height storage with wooden doors - 180° hinge - wooden shelves - Safety test - Certificate no. 248418 IT/EN - UNI EN 14073-3:2005 and UNI EN 14074:2005
- Cubica S full-height storage with glass doors - 110° hinge - metal shelves - Safety test - Certificate no. 250055 IT/EN - UNI EN 14073-3: 2005 and UNI EN ISO 14074:2005
- Set of drawers - Certificate no. 248417 IT/EN - UNI EN 14073-3:2005 and UNI EN 14074:2005
- Folder rack - Certificate no. 250056 IT/EN - UNI EN 14073-3:2005 and UNI EN 14074:2005



# **ETOILE PROJECTS**







## Projects





## Projects



## Clients



### **FERRARI AUTO**

Maranello

### **MASERATI**

Modena

### **PORSCHE**

Pesaro

### **GALBANI SPA**

Spa Milano

### **CREDIT AGRICOLE**

Filiali in tutta Italia

### **GIORGIO ARMANI**

Settimo Torinese (TO)

### **FEDERCALCIO**

Roma

### **L'ESPRESSO**

Roma – Milano

### **FERRERO**

Alba (CN)

### **SCHNELL**

Calcinelli (PU)

### **WARNER BROS**

Roma

### **CONFCOMMERCIO**

Roma

### **GENERALI SPA**

Roma

### **CONFIDI**

Rimini - Cagliari

### **VAPA APPALTI**

Roma

### **ORIGINAL BIRTH**

Pignataro Maggiore (CE)

### **GIOCHI PREZIOSI**

Milano

### **BANCA D'ITALIA**

Roma

### **ROBOPAC**

San Marino - Rimini

### **KERAKOLL**

Sassuolo

### **DONDUP**

Fossombrone (PU)

### **BRITISH AMERICAN TOBACCO**

Trieste

### **ISTITUTO MARANGONI**

Firenze - Milano

### **CREDITO MONEGASCO**

Montecarlo

### **DOLPHIN ENERGY TOWER**

Doha, Qatar

### **NATIONAL BANK OF ABU DHABI**

Dubai, UAE

### **AL AHLI BANK DOHA,**

Qatar

### **SANOFI AVENTIS MOSCA,**

Russia

### **ROYAL PACIFIC GROUP ABUJA,**

Nigeria

### **FORA SPACE LONDON,**

UK

### **COMMERCIAL BANK OF ETHIOPIA**

Addis Abeba, Etiopia

### **EIFFAGE VELIZY,**

France

### **SWISSOTEL CORNICHE PARK TOWERS**

Doha, Qatar

### **UNIVERSITY MEDICAL CENTER**

Lubiana, Slovenia



**Etoile s.r.l. - Società Unipersonale**

Via Delle Industrie, 9/B 61040 Sant'Ippolito ( PU ) Italy

P. +39.0721.85.59.34

info@etoilesrl.it - [www.etoilesrl.it](http://www.etoilesrl.it)